

PRESS KIT

# NEWCASTLE SHOW

*UNLEASHING EXTRAORDINARY*







# CONTENTS

MAP 2

WELCOME 5

SHOW ESSENTIALS 6

THANK YOU TO OUR  
SPONSORS AND MEDIA  
PARTNERS 8

WHAT'S ON 10



# WELCOME

**The Newcastle Show is a much loved tradition for the Newcastle and Hunter Region that dates back to 1902. We continue to innovate and expand the program to engage and entertain tens of thousands of attendees across three days from 28 February to 2 March 2025.**

**AH&I PRESIDENT PETER EVANS, OAM**

Brought you by the Newcastle Agricultural, Horticultural & Industrial Association, the 2025 Show presents the nostalgia of carnival rides, side show alley, a variety of food options, and roaming entertainment with local talent and competitions. In total there are more than 50 events and attractions included with entry to the Showground in Broadmeadow.

This year we see the return of community favourites such as the centre ring show with livestock parades, show jumping and fireworks on Friday and Saturday night. Tantos IT Community Stage will feature Starstruck and various entertainment including local music groups ROOM 104, Love That Hat, Jemma Beech, and The Viper Creek Band.

We are thrilled to quite literally “go back to the future” with a special appearance from the DeLorean time machine, the adapted flying car made famous in the 1985 film Back to the Future. We also welcome more cutting edge exhibitions and stall holders who will bring new innovations and ideas to visitors as they celebrate our proud history and unique blend of city and country life.

We are grateful for the support of our many partners who make this Show possible, including sponsors, media, local businesses and the many individuals who donate their time and resources. Thank you, and we hope you enjoy the Show!





# SHOW ESSENTIALS

## OPENING HOURS

9:00am - 10:00pm  
Friday and Saturday

9:00am - 5:00pm  
Sunday

## MEDIA ACCREDITATION AND ACCESS

All media representatives reporting on the Show must be accredited prior to the event. Accreditation is available via [www.newcastleshow.com.au](http://www.newcastleshow.com.au). Report to the Show Office to collect your media pass.

## ONSITE VEHICLE ACCESS FOR BROADCAST MEDIA

Television news crews requiring onsite vehicle access for filming must contact [marketing@newcastleshow.com.au](mailto:marketing@newcastleshow.com.au) to arrange prior access.

## THE NEWCASTLE SHOW MEDIA TEAM

The media team is on hand in the lead up to and during the Show and can be contacted for story ideas and interviews with competitors, entertainers, judges and stewards.

### Rhonda Campbell

Marketing Coordinator  
0410 310 092  
[marketing@newcastleshow.com.au](mailto:marketing@newcastleshow.com.au)

## THE NEWCASTLE SHOW SPOKESPEOPLE

Interview requests with the following authorised spokespeople should be organised through the Media Team:

### Peter Evans, OAM

President AH&I

## MEDIA RELEASES AND ALERTS

Media releases and alerts will be distributed to media via email and can also be accessed through [newcastleshow.com.au](http://newcastleshow.com.au). Daily alerts will be emailed and uploaded to the website at the end of each day, providing Show highlights and information from the following day.

## COMPETITION RESULTS

Results of all competitions will be available at [newcastleshow.com.au](http://newcastleshow.com.au) a week after the show.

## RE-ENTRY

Re-entry is not available once ticketholders have exited the Showgrounds.

## RECYCLING

There are clearly marked recycle and waste bins within the Showgrounds.

## SMOKING POLICY

The Newcastle Show is a non-smoking event. This includes E Cigarettes and vapes. A designated smoking area is available.

## ACCESSIBILITY

The Newcastle Showground aims to be accessible and welcoming to all. The walkways are sealed and accessible toilets are located within the showgrounds. A disability viewing platform is located directly in front of the Member's Grandstand.

## TRANSPORT & FACILITIES

Please refer to the Showground map for additional details.





# THANK YOU TO OUR SPONSORS AND MEDIA PARTNERS



# WHAT'S ON



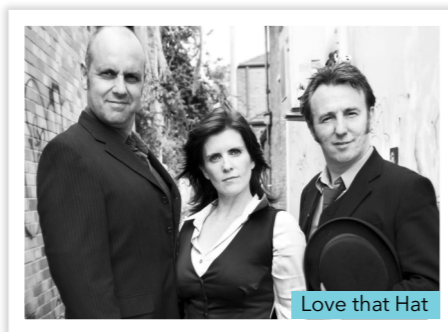
## MUSIC & ENTERTAINMENT

### Friday

- ROOM 104
- Love that Hat

### Saturday

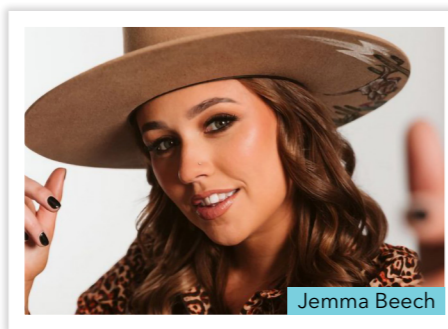
- Jemma Beech
- The Viper Creek Band



Love that Hat

### Love that Hat

Calling all Mad Hatters, Love That Hat will be kicking off the Newy Show on Friday night. Featuring the incomparable Sue Carson, the wildly talented David Carter and the remarkable Mikey Stove. Love that sound, love that style, love that music



Jemma Beech

### Jemma Beech

With her genuine vocals, captivating storytelling, and infectious energy, Jemma Beech is not just another country artist—she's a breath

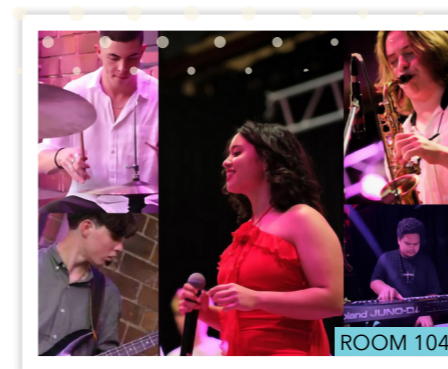
of fresh air revitalising the music scene. Setting the stage on fire, Jemma stormed into 2024 as a top 10 Star Maker finalist at the Tamworth Country Music Festival, leaving an indelible mark with her electrifying performance.



The Viper Creek Band

### The Viper Creek Band

One of Australia's favourite country-rock acts, the Newcastle locals are bringing their seamless live performance to the Newy Show. Known for their live performances and evolving sound, The Viper Creek Band has been collecting fans since 2011, achieving ARIA top 5 and #1 charting albums and top 10 radio singles.



ROOM 104

### ROOM 104

Formed in the practice rooms of the Australian Institute of Music the band ROOM 104 bring together bright new funk and jazz players jamming it out to some well known pop tunes. ROOM 104 is an exciting look into what the future holds within the professional Australian music scene, spending most of their sitting in and gigging with many bands around Sydney and Newcastle, these young players bring charisma and vibes seldom seen for people their age.

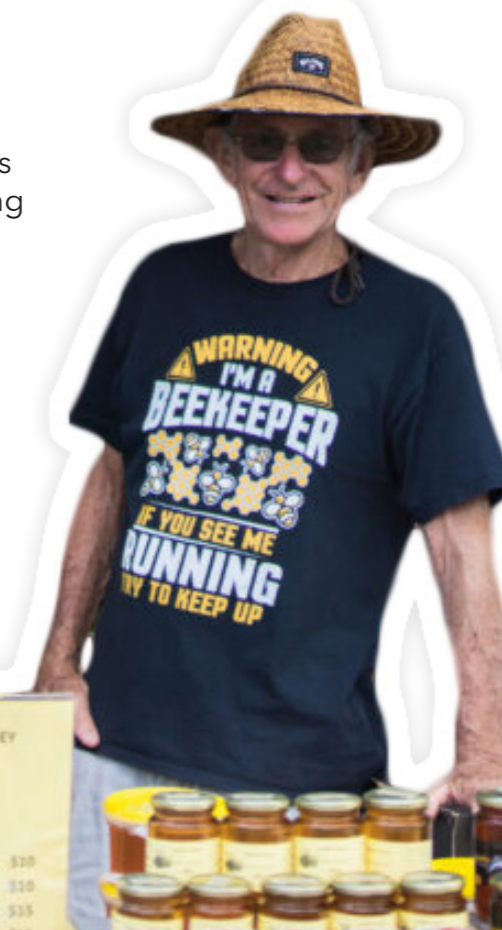
## COMPETITIONS

### Art

The Newcastle Show invites artists to showcase their talents in the 2025 Art Competition & Exhibition, with categories spanning landscape, abstract, and Indigenous art. Celebrating Newcastle's vibrant art community, the event offers prize opportunities and the chance to sell artwork, honouring creativity and culture in the heart of the Hunter.

### Cookery

The Newcastle Show's 2025 Baking Competition invites amateur bakers and junior chefs to showcase their skills in the art of baking. Featuring categories ranging from classic cakes to creative treats, this event promises a delightful display of talent and taste. With trophies, and prizes up for grabs, participants will compete in a fun and community-spirited atmosphere.



LOCAL HONEY	
300g	\$6
500g	\$10
2kg	\$38
Lip balm	\$4
Creamed Honey	\$10
Honey	\$10
	\$15
	\$15







Judging is open to the public, offering a unique chance to see expert evaluations in action.

### Handcraft

The Newcastle Show's 2025 Handcraft Competition invites creators of all ages and abilities to showcase their skills across a variety of categories, including embroidery, quilting, knitting, up-cycled art, and more. With ribbons, prizes, and special awards on offer, this event highlights the diverse talents within the community.

### Honey

Proudly sponsored by AGL, the Newcastle Show's 2025 Honey Competition invites beekeepers and honey producers to showcase their best liquid, creamed, and comb honey, as well as beeswax and bee photography. With categories open for all skill levels, awards, and cash prizes, this event highlights the rich variety and quality of Australian honey.

### Horticulture

Proudly sponsored by Hunter Water, the Horticulture Competition invites gardeners, schools, and young exhibitors to showcase their skills.

With categories for fruits, vegetables, flowers, terrariums, potted plants, and scarecrows, this event celebrates the region's agricultural and creative talents. Open to all ages, the competition features prize money, and special awards.

### Icing and Decorating

The Newcastle Show's 2025 Icing & Decorating Competition invites bakers and decorators of all skill levels to showcase their talent and imagination. With categories for juniors, novices, and open competitors, the event highlights themes of artistry and technical precision. From novelty cakes to sugar sculptures, this competition celebrates the art of cake decorating with special prizes, including the People's Choice Award for the most popular exhibit.

### Preserves

The Newcastle Show's Preserves Competition invites makers of jams, butters, pickles, and sauces to showcase their culinary skills. With categories for, novice, and junior exhibitors,

this event celebrates the tradition of homemade preserves. Whether you're an experienced preserver or a first-time participant, this competition promises a flavourful celebration of creativity and craftsmanship.

### Stud Beef Cattle

Proudly sponsored by GPA Financial Services the Stud Beef Cattle and Stud Beef Cattle Junior competitions are highly anticipated features of the Newcastle Show. There are categories for schools and individuals, with the Supreme Exhibit of Show presented on Saturday 1 March.

### Woodcraft

Want to meet new people, learn new skills, hone existing skills or just want a good coffee? The Woodturners and Woodworkers of the Hunter welcome you. Exhibitor categories range from novice to experienced with cash prizes and ribbons awarded.





## CENTRE RING

### Friday 28th February

9:00am - 2:00pm Show Jumping and Equestrian Classes

2:30pm Tent Pegging

3:30pm Airtime FMX

4:00pm Tent Pegging

5:00pm Hot Wheels Stunt Show

5:30pm Camel Races

6:00pm Grand Opening + Parade

7:00pm Hot Wheels Stunt Show

7:30pm Airtime FMX

8:30pm Epic Fire Performance

9:00pm Fireworks



### Saturday 1st March

9:00am - 12:30pm Equestrian Classes

10:00am Woodchop Competition - Woodchop Stand

1:00pm Tent Pegging

2:00pm Hot Wheels Stunt Show

2:30pm Camel Races

3:00pm Tent Pegging

3:30pm Airtime FMX

4:00pm 6 Bar Jump

5:00pm Ride and Drive

6:00pm Camel Races

6:30pm Kate Clancey

7:00pm Airtime FMX

7:30pm Hot Wheels Stunt Show

8:30pm Epic Fire Performance

9:00pm Fireworks

### Sunday 2nd March

9:00am - 12:00pm Equestrian Classes

12:00pm Cutting

1:00pm Hot Wheels Stunt Show

1:30pm Kate Clancey

2:00pm Cutting

3:00pm Hot Wheels Stunt Show



## TANTOS IT COMMUNITY STAGE

### Friday 28th February

12:00pm - 1:00pm Starstruck (Ben, Charlee & Maggie)

1:00pm - 2:00pm Starstruck (Isabel)

2:00pm - 2:30pm Starstruck (Gridlock)

3:00pm - 4:40pm ROOM 104

5:15pm - 8:30pm Love That Hat

8:30pm Stage Closed



### Saturday 1st March

10:30am - 11:00am KC Dance HQ

11:00am - 11:30am Perform Ability Dance

11:30am - 12:00pm EV Dance

12:00pm - 1:00pm Maxi Jazz Dance

1:00pm - 2:00pm Starstruck (Lara & Tiana)

2:00pm - 2:10pm Chance 2 Dance

2:00pm - 3:00pm Starstruck (Tane)

3:00pm - 4:00pm Starstruck (Maya)

4:00pm - 5:00pm Starstruck (Sage, Conway & Neave)

5:30pm - 6:15pm Jemma Beech (Country Artist)

6:30pm - 9:00pm The Viper Creek Band

9:00pm Stage Closed

### Sunday 2nd March

9:30am - 10:00am England Purton Dance Academy

10:00am - 11:00am The Rhythm Factory Dance

11:30am - 12:30pm HSPCA Show Band

1:00pm - 1:30pm Starstruck (Maya)

1:30pm - 2:30pm Starstruck (Tyler)

2:30pm - 3:30pm Starstruck (Stomp)

3:30pm Stage Closed

## DOGS DAY OUT FESTIVAL

Sponsored by The Herald (pre-registration required)

### Friday 28th February

9:00am	Gates Open
10:30am	Kidz & Canine Talk
12:30pm	Kidz & Canine Talk
1:30pm	Kidz & Canine Talk
4:00pm	Kidz Fancy Dress
4:30pm	Strike a Paws Fancy Dress
5:00pm	Cutest Puppy - Under 1
5:30pm	Cutest Dog - 1 +
6:00pm	Best Male & Best Female in Show
6:30pm	Dog Event Section Finished

### Saturday 1st March

9:00am	Gates Open
10:00am	Best Vocal Dog Performance
10:30am	Musical Sit
11:00am	Dog Got Talent or Tricks
11:30am	Waggiest Dog Tail
12:00pm	Dog Biscuit Eating Competition
12:30pm	Dog & Egg & Spoon Dog Race
1:00pm	Golden Bone Dog Races - Small
1:30pm	Golden Bone Dog Races - Medium

### Saturday 1st March

2:00pm	Golden Bone Dog Races - Large
2:30pm	Best Male Dog in Show
3:00pm	Best Female Dog in Show
3:30pm	Licki Mat Competition
4:00pm	Strike a Paws Fancy Dress
4:30pm	Cutest Puppy - Under 1
5:00pm	Cutest Dog - 1 +
5:30pm	Dog Event Section Finished

### Sunday 2nd March

9:00am	Gates Open
9:30am	Shortest Dachshund
10:00am	Longest Dachshund
10:30am	Cutest Wired Dachshund
11:30am	Mini Dachshund Derby - Under 12cm
12:30pm	Dachshund Derby Dog Races - Over 12cm
1:30pm	Best Male Dachshund in Show
2:00pm	Best Female Dachshund in Show
2:15pm	Dachshund Biscuit Eating Competition
2:30pm	Strike a Paws Fancy Dress
2:45pm	Licki Mat Competition
3:00pm	Cutest Dog Dachshund
3:30pm	Cutest Puppy Dachshund





## EXHIBITION CENTRE

## ANIMAL EXPERIENCES

## CARNIVAL RIDES & GAMES

## SHOWBAGS

## FOOD & DRINKS



## 50 THINGS TO DO AT THE SHOW:

Included with Entry

# 1

Airtime FMX Show

# 2

Animal Nursery

# 3

Antique Farm  
Machinery Display

# 4

Army Display

# 5

Art Competition  
& Exhibition

# 6

ASTRO Show Mascot  
(meet & greet)

# 7

BYD Electric Car  
Display & Test Drives

# 8

Cakes, Icing  
& Decoration  
Competitions & Display

# 9

Camel Racing & Rides

# 10

Cattle Competition

# 11

Cookery Competition

# 12

Cutting Horse  
Competition

# 13

Dance Groups

# 14

Delorean Car Display

# 15

Dog Competitions



16

Emergency Services Displays

17

Epic Fire Shows (Friday &amp; Saturday night)

18

Equestrian Events

19

Fireworks Show (Friday &amp; Saturday night)

20

Fizzic Science Shows

21

Grand Parade (Friday night)

22

Handcraft Competition &amp; Display

23

Honey Tasting &amp; Bee Display

24

Horticulture Competition &amp; Display

25

Horticulture Kids Craft &amp; Seed Planting

26

Hot Wheel Stunt Show

27

Jemma Beech (Saturday night)

28

Kate Clancey Horsemanship

29

Live Radio Broadcasts (giveaways &amp; promotions)

30

Love That Hat (Friday night)

31

Marching Bands

32

Model Train Interactive Display

33

Mounted Police

34

Noah's Racing Pigs

35

Photography Competition &amp; Exhibition

36

Poultry Display

37

Reptile Show

38

Ride &amp; Drive (Horse Event)

39

Rural Fire Display

40

Sheep Shearing Demonstration

41

Show Jumping (Horse Event)

42

Six Bar Jump (Horse Event)

43

Star Struck Performances

44

Super Heroes (roaming)

45

Tent Pegging (horse event)

46

The Viper Creek Band (Saturday night)

47

University of Newcastle Student Musician Performers

48

Westrac Heavy Machinery Display

49

Wood Working Displays

50

Woodchop Competition (Saturday)

\*All events subject to change



# NEWCASTLE SHOW

28 FEB-2 MAR 2025

Newcastle Showground, Broadmeadow NSW 2292  
marketing@newcastleshow.com.au • (02) 4961 2085

Marketing by **pepperit.** | pepperit.com.au