



# 2025 NEWCASTLE SHOW HORTICULTURE SCHEDULE

Friday 28 February to Sunday 2 March



**PROUDLY SPONSORED BY HUNTER WATER**



**Entries Close:**

**Monday, 24 February 2025 at 5.00pm**

**Exhibit Delivery:**

Thursday 27 February 2025 from 8.00am to 10.00am

Thursday 27 February 2025 from 4.00pm to 6.00pm

**Closed Judging:**

Thursday 27 February 2025 at 6.45pm

**Note: Exhibitors will be bumping in on Thursday 27<sup>th</sup>, so please drive carefully or walk through Curley Road gates entry for delivery.**

**Enter online at: <https://showday.online/show/newcastleshow>**

**School Scarecrow - Refer last page**

# Contents

## **HORTICULTURE – OPEN SECTION – NON COMMERCIAL**

Fruiting Vegetables (9 classes).....	4
Root Vegetables (6 classes) .....	4
Green leafy vegetables (4 classes) .....	4
Fruits – Open Section: Non-commercial(5 classes) .....	4
Eggs – Open Section: Non-commercial.....	5
Terrarium – Open Section: Non-commercial.....	5
Potted Plants/Herbs – Open Section: Non-commercial.....	5
Cut Flowers - Open Section - Non-commercial .....	5

## **HORTICULTURE – SCHOOL AGED & UNDER 18 YEARS SECTION .....**

Fruits and Vegetables: School Aged & Under 18yrs .....	6
Terrarium: School Aged & Under 18yrs.....	6
Potted Plants/Herbs – School Aged & Under 18 yrs: .....	6
Colour-in: School Aged & Under 18yrs .....	7
Novelty: School Aged & Under 18yrs.....	7
Scarecrow – Open Section: Non-Commercial.....	8

*The Newcastle Agricultural Horticultural and Industrial Association Inc was formed in 1899 and held the first Newcastle Show in May 1902. The horticulture competition has been a staple of the event, showcasing the region’s agricultural and gardening talents. The horticulture section has consistently been a highlight, featuring a variety of categories such as floral arrangements, vegetable displays, and garden designs.*

**We thank the following SUPPORTERS:**



ENTRY	<p><b>ENTRY FEES</b>  Open - \$2  Under 18 years - \$1  School Scarecrow – Free Entry  <b>Also see conditions of Entry further below</b>  Enter Online – <a href="https://showday.online/show/newcastleshow">https://showday.online/show/newcastleshow</a> .  Manual Entry - Alternatively, please call into the show office to complete an entry.  No late entries accepted. No refund of entry fees</p>
ENTRY CLOSING DATE	<p><b>Horticulture – MONDAY 24<sup>TH</sup> February – Scarecrows - See closing for Scarecrows back page</b></p>
CONTACT DETAILS	<p>Newcastle A. H &amp; I Association.  Newcastle Showgrounds,  PO Box 53, Broadmeadow NSW 2293  Phone: 49 61 2085 Email: <a href="mailto:competition@newcastleshow.com.au">competition@newcastleshow.com.au</a></p>
EXHIBIT DELIVERY LOCATION: Delivery times/days for Scarecrows see schedule on back page	<p><b>Horticulture - Thursday 27/2/25: 7.00am to 10.00am.....and again Horticulture - Thursday 27/2/25: 3.00pm to 6.30pm</b>  If you are unable to bring your exhibit to the Showgrounds during these times, please ph. Melissa Fogarty on 0411777910 E: <a href="mailto:Hunterorganicgrowerssociety@gmail.com">Hunterorganicgrowerssociety@gmail.com</a></p> <p><b>HORTICULTURE- PAVILION:</b> Located under grandstands- Drive through Griffiths Road entry and take the right- hand road, Grandstand on left. <u>Alternatively</u> walk through Curley Road gates – Pavilion just to your left.  <b>Photo Garden Exhibits</b> - You may bring in your Photo exhibits at any time, to the Show Office – If this is not suitable, please email to us. Photo judging is by People’s choice  A receipt will be given upon delivery, which will be required to produce for collection.</p>
CONDITIONS OF ENTRY /JUDGING CRITERIA	<p><b>ENTRY:</b> An Exhibit cannot compete in any Class additional to those for which it is entered on Application Entry. Entry must be complete, otherwise the entry may be rejected.</p> <p><b>LIMIT ENTRY</b>  As stated in schedule</p> <p><b>AGE:</b>  Exhibitors entering the Newcastle Show as an individual or as part of a team must be a <b>minimum of 5 years old</b>. An Exhibitor will be considered to be 5 years old if they have had their 5th birthday on or before the first day of the 2025 Newcastle Show.</p> <p><b>JUDGING</b>  <b>JUDGING:</b> Judged on Thursday 27/2/25. Closed to public  <b>Judging Criteria:</b> Plants/produce, must have been grown by exhibitor.  Please adhere to vessel sizes as indicated.  <b>SEE SECTION PAGES FOLLOWING FOR ANY OTHER CONDITIONS</b></p>
EXHIBIT COLLECTION	<p><b>Sunday 2/3/25 – 4pm to 5pm</b> from <b>HORTICULTURAL PRECINCT</b>  Alternatively, collect on Monday 3/3/25 from Show office, or please phone to make alternative arrangements - kept for 1 week only.</p> <p><b>Note:</b> No vehicle entry on Sunday 2/3/25  <b>Note:</b> Exhibitors must produce <b>receipt</b> when collecting goods.</p>
PRIZES/AWARDS – All classes  Exception: <u>School Scarecrow</u> – please see schedule page for details	<p><b>Horticulture - FIRST PRIZE</b> – \$5 Prize money, Prize card and ribbon  <b>Horticulture - SECOND PRIZE</b> – \$2 Prize money, Prize card and ribbon  <b>Horticulture - HIGHLY COMMENDED</b> - Prize card -<b>RIBBONS IF AVAILABLE</b></p> <p><b>RIBBONS:</b> Where indicated in schedule  <b>PRIZES</b> – Where indicated. <b>Bunnings Vouchers</b> will be distributed at Judges discretion.  <b>SCHOOL SCARECROW</b> – SEE SCHEDULE FOR PRIZES/AWARDS  <b>AWARDS/RIBBONS</b> -Awards will be at the judge’s discretion &amp; if sufficient entries.</p>
MEMBERSHIPS – NEWCASTLE A.H. & I ASSOCIATION	<p><b>OPTIONAL - Membership of the Association - Please call 4961 2085, or email us.</b>  Membership runs from 1 July to 30 June.  Membership: Adult \$30 – Unlimited entry to show  Members discounted tickets discounted available - \$20 guests &amp; \$10 concession/child.</p>

# HORTICULTURE – OPEN SECTION: NON-COMMERCIAL

## VEGETABLES – OPEN SECTION: NON-COMMERCIAL

\$2 Entry fee for all Open Sections

\*2 X Entries per Exhibitor **per class** (max) - in the Open section

Exhibits can be any variety within the class but must all be the same variety.

If the points are close, the judges may cut open one of the items in the exhibit.

### FRUITING VEGETABLES (9 CLASSES)

Class #	Class Description
Classes listed will be placed on a paper plate or similar for judging	
801	One (1) Pumpkin with stalk
802	Six (6) Cherry tomatoes with stalks
803	Two (2) Tomatoes with stalks (Roma, beefsteak, etc)
804	Two (2) Zucchini's with stalks, any variety
805	Three (3) Chillis with stalks, any variety
806	Six (6) Beans with stalks, any variety
807	Two (2) Cucumbers with stalks, any variety
808	One (1) Eggplant with stalk (Round or Finger)
809	Any other fruiting vegetable not listed, minimum two (2) items

Jenny Bourke has donated \$50 in prizemoney for the winner of class 801



### ROOT VEGETABLES (6 CLASSES)

Class #	Class Description
Classes listed will be placed on a paper plate for judging	
810	Two (2) Carrots
811	Two (2) Potatoes
812	Two (2) Beetroot
813	Two (2) Radishes
814	One (1) hand of Ginger, Turmeric or Galangal with roots



### GREEN LEAFY VEGETABLES (4 CLASSES)

Class #	Class Description
Classes listed below will be placed in a vase of water or similar for judging.	
815	Three (3) stalks of Rhubarb
816	Three (3) stalks of English spinach, Swiss Chard or Mustard
817	One (1) lettuce, any variety, with roots



### FRUITS – OPEN SECTION: NON-COMMERCIAL

If the points are close, the judges may cut open one of the items in the exhibit

1 x exhibit per class

Class #	Class Description
818	Two (2) Apples or Pears
819	Two (2) Citrus
820	Two (2) Stone fruit
821	Five (5) Berries
822	One (1) Dragonfruit



## EGGS – OPEN SECTION: NON-COMMERCIAL

Note: 1 x entry limit per exhibitor per class in this category

Class #	Class Description
823	Chicken eggs – 6 eggs in a carton
824	Duck eggs – 6 eggs in a carton
825	Quail eggs – 12 eggs in a carton



## TERRARIUM – OPEN SECTION: NON-COMMERCIAL

Newcastle Show prohibits any Exhibits using weeds declared by Newcastle City Council. <http://weeds.dpi.nsw.gov.au>  
1 Exhibit per class

Class #	Class Description
826	One vessel – under 300mm



## POT PLANTS/HERBS – OPEN SECTION: NON-COMMERCIAL

Newcastle Show prohibits any Exhibits using weeds declared by Newcastle City Council. <http://weeds.dpi.nsw.gov.au>  
2 Exhibits per class

Class#	Class Description
827	Plant – Any plant, shrub, flower in pot
828	Plant – Any herb/herb garden in pot/planter



## CUT FLOWERS – OPEN SECTION: NON-COMMERCIAL\ 1 x exhibit per class

Class #	Class Description
829	Dahlia
830	Zinnia



## HORTICULTURE -- SCHOOL AGED & UNDER 18 YEARS SECTION

These section - Must be grown by exhibitor

\$1 entry fee for all sections below - under 18 yrs.

**\*1 X EXHIBIT PER CLASS (max)- FOR ALL UNDER 18 YRS SECTIONS**

### FRUITS AND VEGETABLES School Aged & Under 18yrs



1 x entry per exhibitor per class as below

**Must be grown by exhibitor**

Class #	Class Description
831	Two (2) Tomatoes
832	Five (5) Cherry tomatoes
833	Five (5) Beans
834	Two (2) Carrots
835	One (1) Cucumber
836	Two (2) Any vegetable not listed, same variety
837	Six (6) Berries

### TERRARIUM: School Aged & Under 18yrs 1 Exhibit per class

Newcastle Show prohibits any Exhibits using weeds declared by Newcastle City Council. <http://weeds.dpi.nsw.gov.au>

1 x entry per class per exhibitor as below

**Must be work of/grown by exhibitor**

Class #	Class Description
838	Terrarium – not exceeding 300mm (Under 12 yrs)
839	Terrarium – not exceeding 300mm (Over 12 yrs)



### POT PLANTS/HERBS School Aged & Under 18yrs 2 exhibits per class

Newcastle Show prohibits any Exhibits using weeds declared by Newcastle City Council. <http://weeds.dpi.nsw.gov.au>

1 x entry per exhibitor per class as below:

**Must be grown by exhibitor**

Class #	Class Description
840	Plant – Any plant, shrub, flower, in pot
841	Plant – Any herb/herb garden in pot/planter



## COLOUR-IN: School Aged & Under 18yrs

\$1 entry fee per class

**Note: 1 x entry per person per class, per class as below maximum**

**COLOUR-IN, must be coloured by entrant**



**NOTE:** Please enter using any of the DUCK or the CHICKEN outlines.

[Download the outlines here.](#)

Alternatively, email the Society and they will email you the outlines.

**NOTE:** Please deliver your colour-in during delivery times ... **OR...** email a photo of your Colour-in to [hunterorganicgrowerssociety@gmail.com](mailto:hunterorganicgrowerssociety@gmail.com) and attach information about your name and exhibitor number from your online entry.

If teachers are entering students from school classes, please send in your top 3 entries from your class.

Class #	Class Description
842	Colour-in (Under 8 yrs)
843	Colour-in (8 yrs to 12 yrs)
844	Colour-in (Over 12 yrs)

## NOVELTY School Aged & Under 18yrs

\$1 entry fee per

**1 x entries per person per class as below maximum**

**Must be made by entrant**



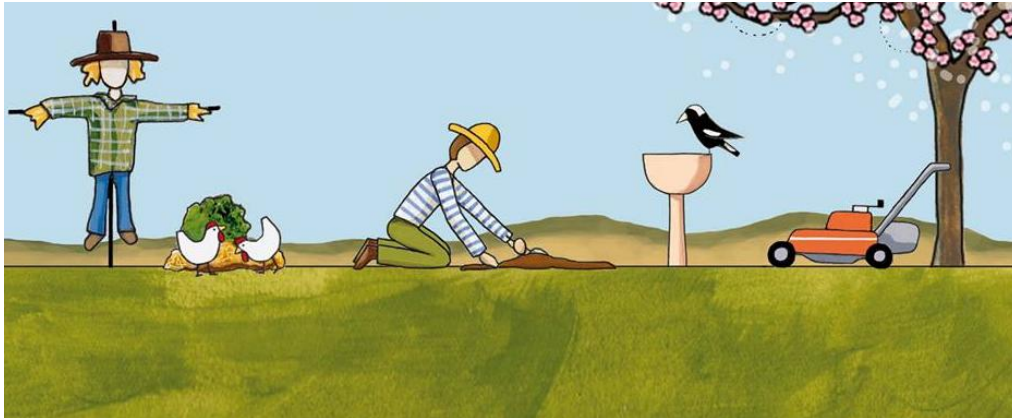
Class #	Class Description
845	Decorated Egg – 5 yrs to 8 yrs
846	Decorated Egg – Over 8 yrs
847	Potato Head – 5 yrs to 8 yrs
848	Potato Head – Over 8 yrs

# SCHOOL SCARECROW

OPEN SECTION: NON-COMMERCIAL

**FREE ENTRY - FOR SCHOOLS**

Proudly sponsors by HUNTER WATER



**SCARECROW, NON-COMMERCIAL – MUST BE MADE AS SCHOOL PROJECT  
OR A PERSON/PERSONS SELECTED TO REPRESENT THEIR SCHOOL**

**1 x Exhibit per class**

**ENTRIES:** Entry is by online application at or by completing an entry form at the Show Office in Broadmeadow.

**ENTER:** <https://showday.online/show/newcastleshow>

**LIMIT:** One entry per school per category below

**RULES/CONDITIONS OF ENTRY:** Scarecrows must be in good taste, not political or controversial.

**WORK:** The majority of work/ideas must be the by the entrants.

**SIZE:** Maximum 2m tall. Minimum 50cm width.

**ENQUIRIES:** [jenny@newcastleshow.com.au](mailto:jenny@newcastleshow.com.au)

**CLOSING DATE:** Monday 24th February 2025 at 5pm for online entries.

**NOTE: DELIVERY OF EXHIBITS:** Thursday 27 February 8.00am to 10.00am

Thursday 27 February 4.00pm to 5.30pm

Class #	Class Description
<b>849</b>	SCARECROW PRIMARY SCHOOL ENTRY - ANY SUBJECT
<b>850</b>	SCARECROW – HIGH SCHOOL ENTRY – ANY SUBJECT

## PRIZES

**EACH HIGH & PRIMARY SCHOOL WILL RECEIVE FOR THEIR SCHOOL:**

1<sup>st</sup> place receives a Ribbon and \$150 for their school

2<sup>nd</sup> place receives a Ribbon and \$50 for their school

3<sup>rd</sup> place receives a Ribbon